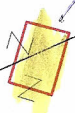


89 WsIV

m. Kamieniec

88 B-RIVa

istniejący pałac



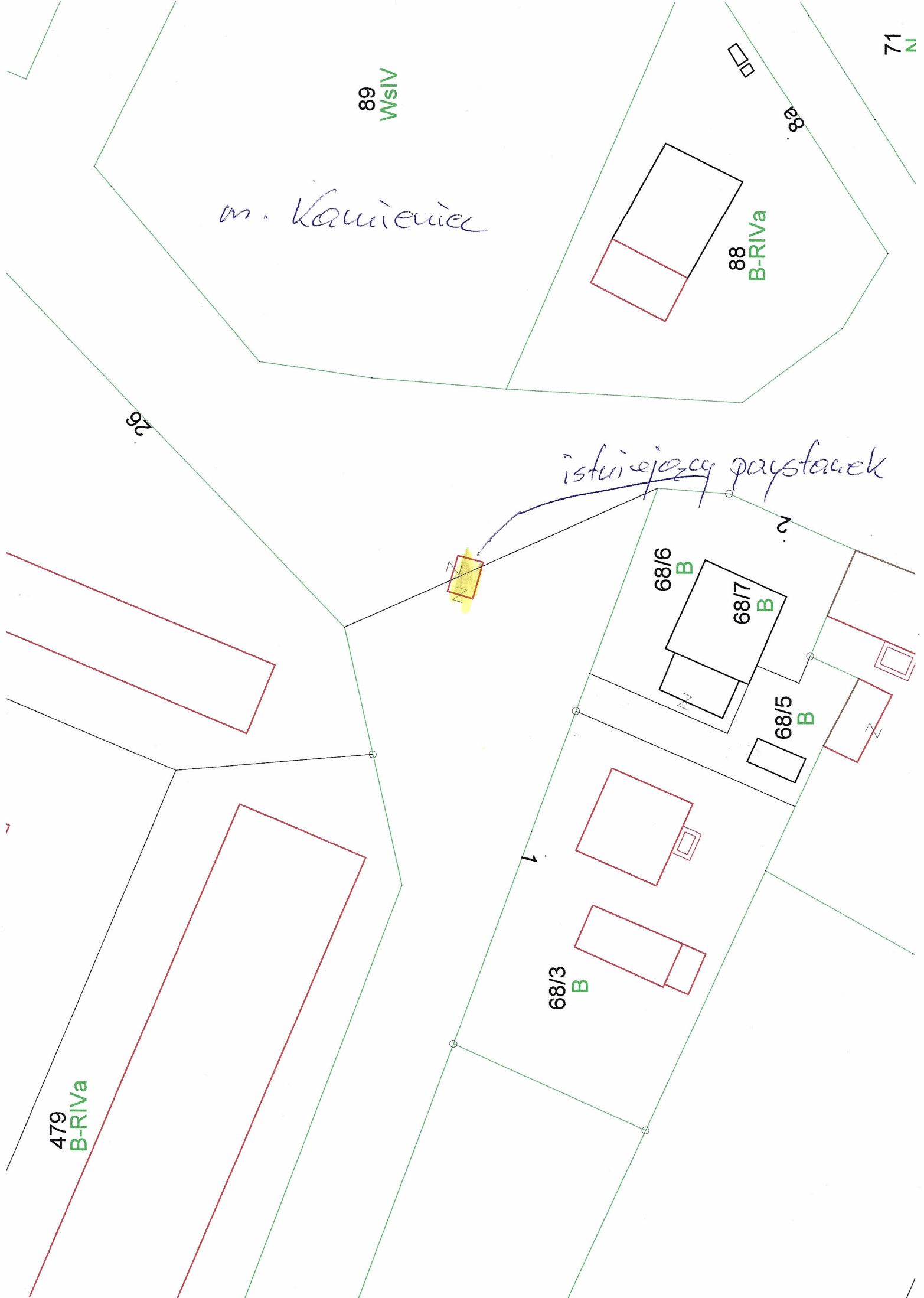
68/6 B

68/7 B

68/5 B

68/3 B

479 B-RIVa





RIVa

Bp

1/1

r.

61
B-RIVa

264/29
Bp

264/17
B-RIVa

18

16

264/24
dr

264/30
dr

*istniejący przystanek
17b*

26
B

m. Hoczajny

15

B-RIVa

265/10
dr-RIVa

48

5

m. Siadło Górze

16
B-RIIib

15

B-RIIib

41

40

41

42

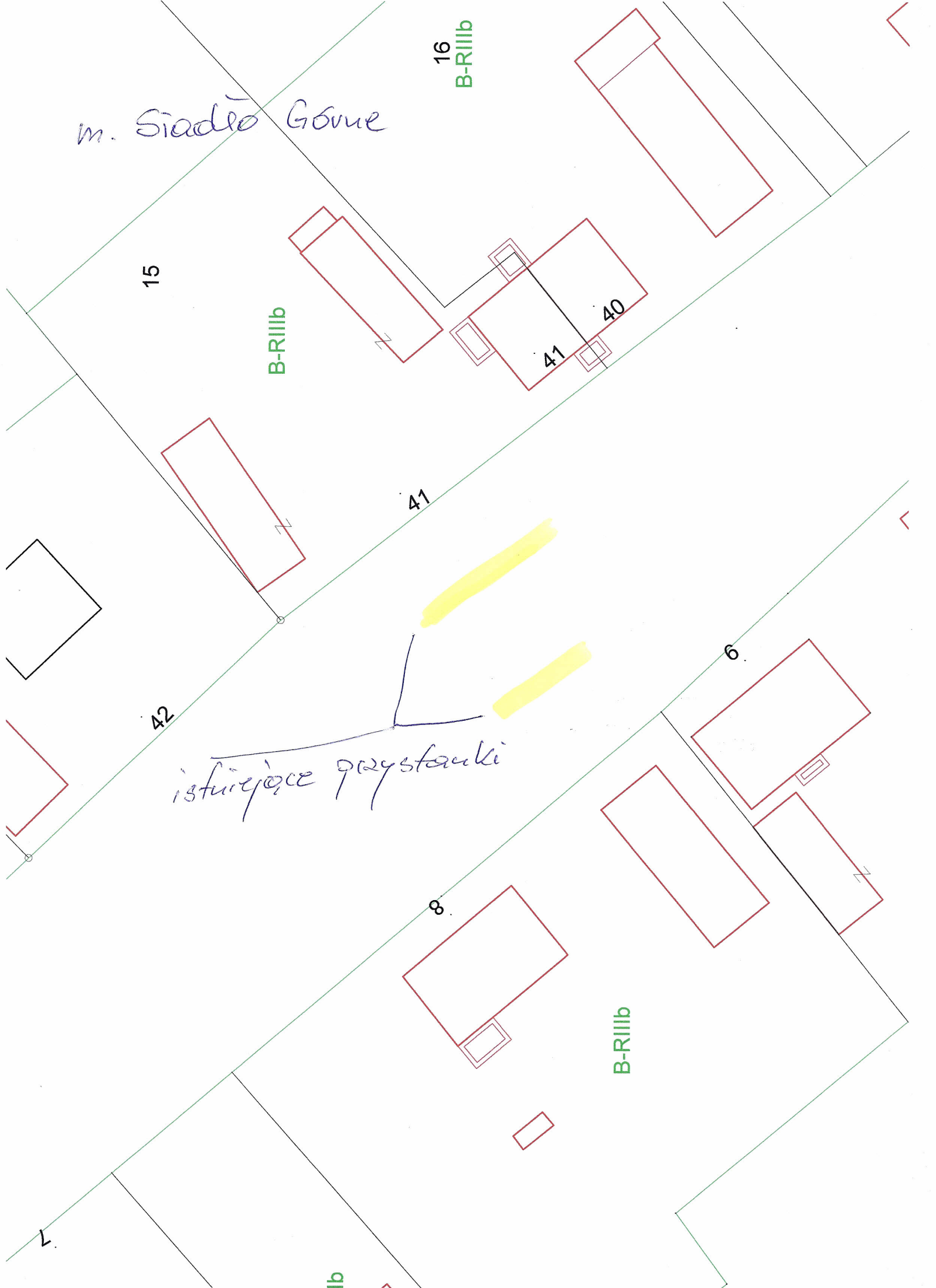
istniejące przystanki

6

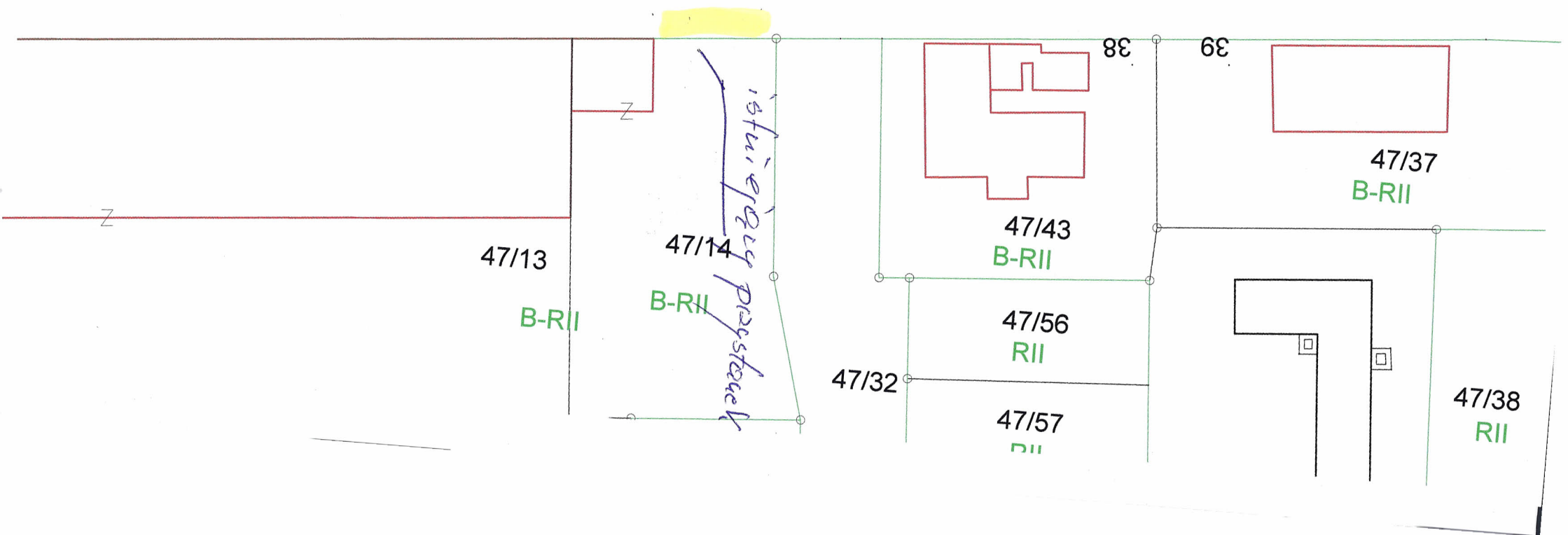
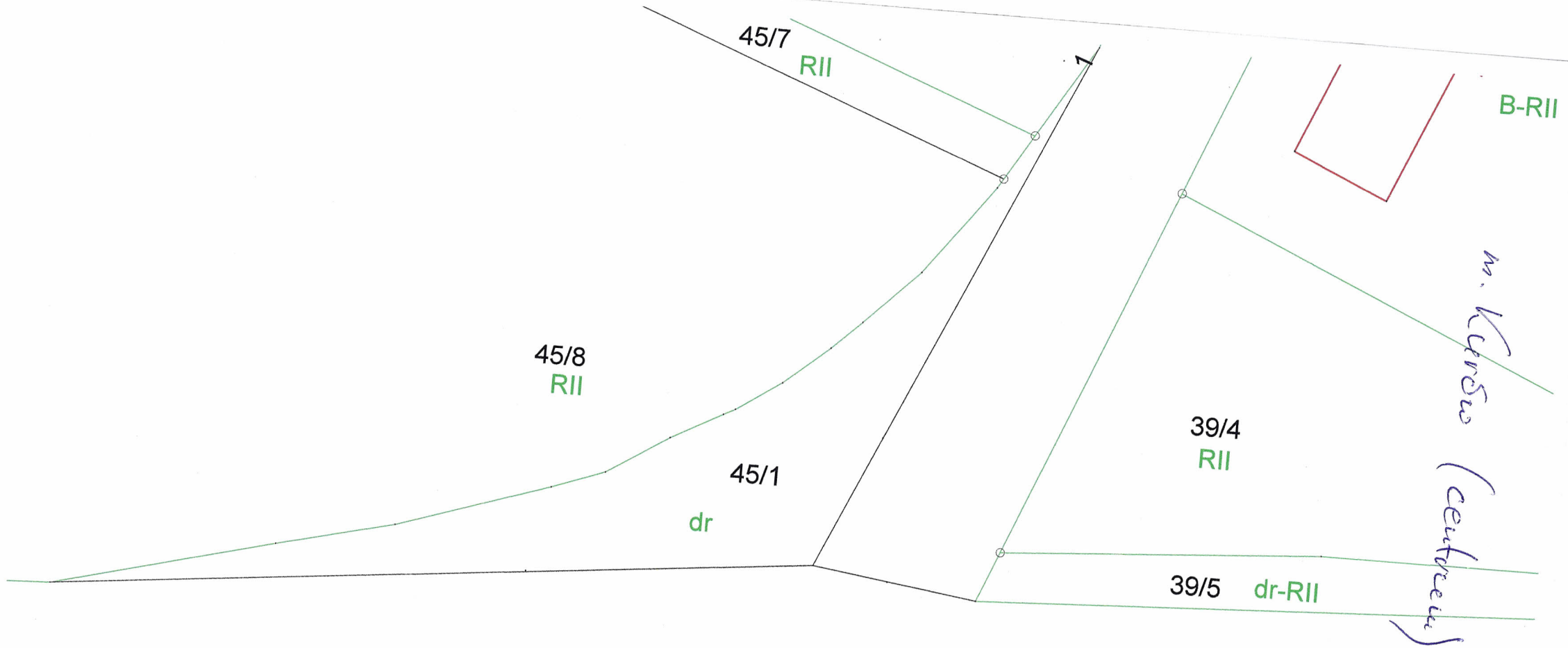
8

B-RIIib

1b









propovnovene lokalizacije pristupačnica



m. Kerbu (predškola)

11/15

59/3 RIIa

82/1 RIIa

11/5 RIIa

59/1 RIIa

59/2 RIIa

83/1 RIIa

96 RIIa

83/2 RIIa

59/4 RIIa

65 B

121 dr-RIIa

64 B

58/3 RIIa

58/1 RIIa

58/2 RIIa

84/2 RIIa

84/1 RIIa

dr-RIIa

RIIa

11/16

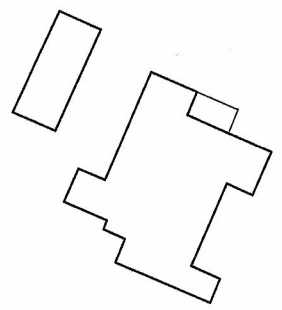
57/1 RIIa

57/2 RIIa

57/3 RIIa

85/1 RIIa

85/2 RIIa



11/6 B

RIIIa

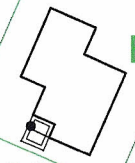
48 B

dr-RIIIa

RIIIa

dr-RII

56/1



B

RII

11/16

RII

56/2 RII

dr-RII

dr-RIIIa

86/4 RII

86/1 Ba

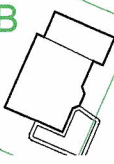
88/1 dr-RII

46/4 RII

RII

48 B

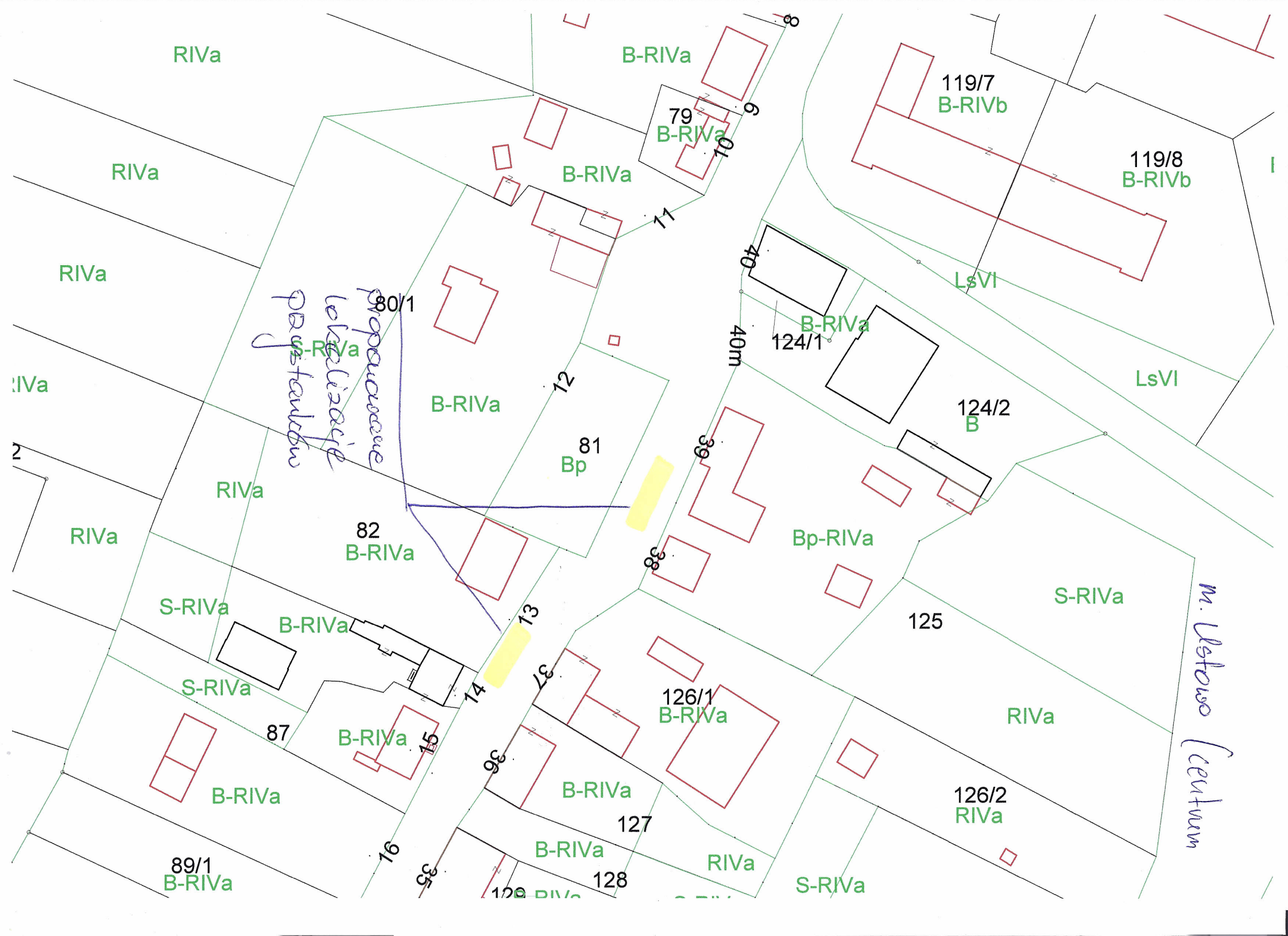
81 B



86/3 RII

RII

88/3 RII



RIVa

B-RIVa

119/7
B-RIVb

119/8
B-RIVb

RIVa

B-RIVa

79
B-RIVa

LsVI

RIVa

*proprietarilor
localitate
pași hanului*

80/1

B-RIVa

B-RIVa
124/1

LsVI

RIVa

12

40m

124/2
B

81
Bp

39

Bp-RIVa

S-RIVa

RIVa

82
B-RIVa

38

125

RIVa

S-RIVa

B-RIVa

RIVa

m. Vestaro Centrum

S-RIVa

87

B-RIVa

15

126/1
B-RIVa

126/2
RIVa

B-RIVa

B-RIVa

127

RIVa

S-RIVa

89/1
B-RIVa

16

35

128

128

3/1
dr

182V

пропорциона
технология
проектиру

43/2
dr

m. Устово
[2] год до автохозяйства производств

N

59
RIVb

635

60
RIVb

67
RIVb

B-RIVb

111
B-RIVb

RIVb

113/2
B-RIVb

61
RIVb

68
RIVb

B-RIVb

112
B-RIVb

116/3
RIVb

62
RIVb

69
RIVb

B-RIVb

113/1
B-RIVb

116/2
RIVb

RIVb

65
dr

70
RIVb

B-RIVb

114
B-RIVb

116/5
RIVb

RIVb

dr

115
B-RIVb

116/6
B-RIVb

118
B-RIVb